

What could you press into the clay? If your hand or foot print does not fit, why not try your finger prints or a pet's paw print? Maybe you could try leaves, old jewellery, trinkets, plastic toys — there are lots of things that make a great imprint!

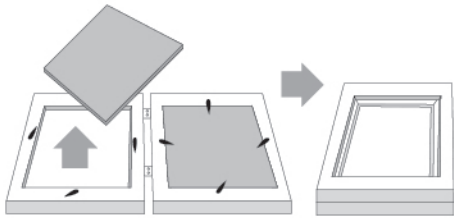
CLAY PLASTER MOULDING KIT

INSTRUCTIONS

STEP 1

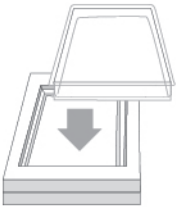
Check you have all the contents required to turn your plaster mould into a work of art:

- Photo frame
- Bag of plaster
- Bag of clay
- Plaster moulding tray
- Mini rolling stick
- Sticker sheet
- Stirring stick
- 5 Paint pots
- Paint brush
- Mixing tray
- Instruction sheet
- Something to press into the mould (required)
- A photo for the frame (required)
Size: 118mm wide x 168mm height

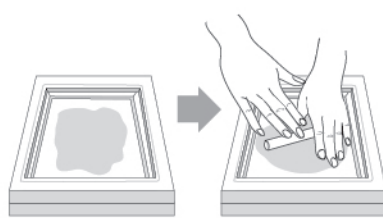


STEP 2

Remove the backing board and plastic from **both** sides of your frame and put aside. Fold the frame in half.



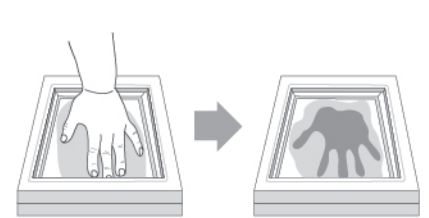
Push the plaster moulding tray firmly down into the centre of the frames. This will ensure your plaster mould retains its shape.



STEP 3

Press the clay into the plaster moulding tray as shown. Use the mini rolling stick to make the clay smooth and flat. Ideally there should be room around the sides of the clay to ensure a strong contact area for the plaster.

TIP: For best results, keep the clay as thick as you can when making your print. (The thinner the clay is pushed, the harder it is to remove after the plaster has set.)



STEP 4

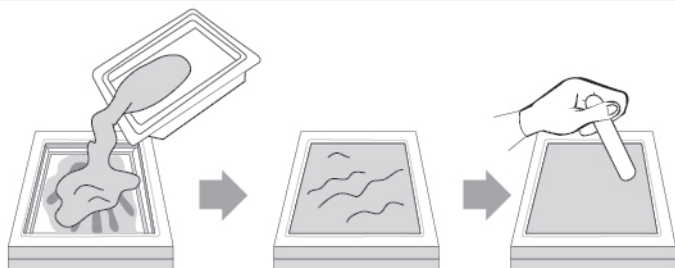
Press into the clay with your hand, foot or whatever you have chosen to make a print from. Press firmly for best results, but stop before the bottom of the container is reached. Allow the clay to dry. Leave for at least an hour until the surface feels dry.

TIP: A few minutes under a hairdryer (adult assistance required) or in the sun may speed up the drying time.

STEP 5

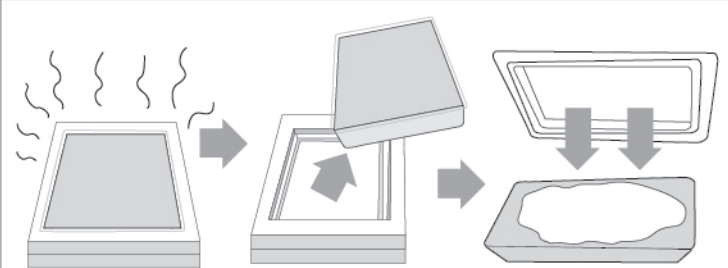
Spread some newspaper or paper if you have any to help prevent any mess. Using the mixing tray provided, pour in your bag of plaster powder.

Gradually add small bits of water at a time while stirring with your stirring stick until it forms a paste-like consistency. You will need to stir the plaster quickly so it blends easily.



STEP 6

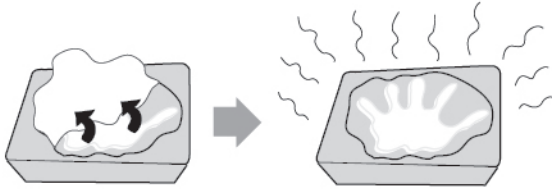
Quickly pour the plaster over your clay print so it completely fills the plaster mould tray right up to the top of the tray. Use the stirring stick to smooth the top of the plaster. This is to ensure that when you place it in the frame, it will sit easily in the correct position. **Do not overfill.**



STEP 7

Allow at least 24 hours for the plaster to dry. Drying times may vary and the plaster should feel firm but not wet. Push the plaster moulding tray out from between the wooden frames. Now **very carefully** remove the plaster mould from the plaster moulding tray. If it feels brittle, it may need more drying time.

INSTRUCTIONS CONTINUED . . .



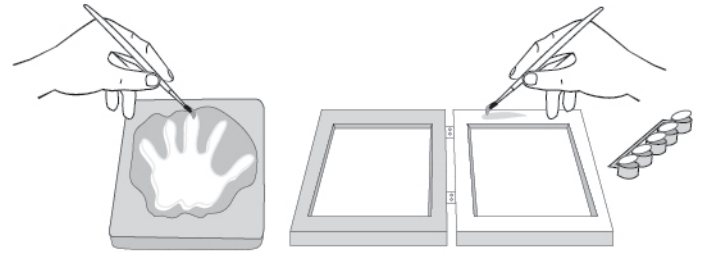
STEP 8

Once it is out of the plastic moulding tray, carefully peel the clay away from the plaster. If the clay was thick enough, it should peel away without pulling any plaster. Now you can see your print!

Allow a further 24 hours for your plaster to set hard.

DO NOT THROW AWAY YOUR PLASTIC MOULDING TRAY! You will need this later.

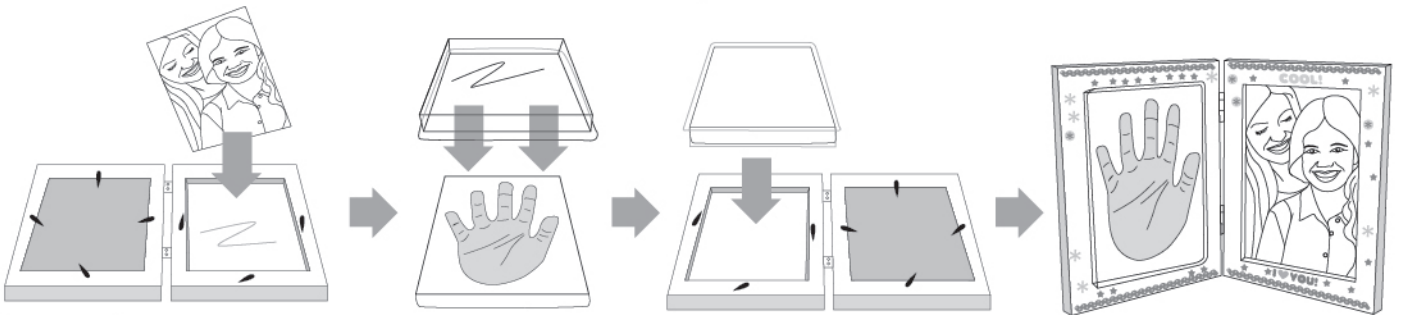
TIP: If your clay was too thin, it may become difficult to pull it away from the plaster. If this is the case, use a piece of the clay you have already removed and stick it to the attached pieces. Use small, quick, tugging motions to pull the remaining clay off.



STEP 9

Now your plaster print is dry, you can start painting and decorating it in any way you like! Use the paints provided, along with the stickers to personalise your plaster print and your photo frame.

TIP: It may be easier to paint a single colour on each of your frames first and wait for this to dry, before then adding decorative stickers or other embellishments. Perhaps you could paint a name on to your plaster print, a birthdate, a sweet message or even a holiday destination!

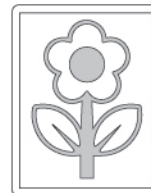


STEP 10

Once the painting on your photo frame and your plaster print have both dried, it's time to assemble them. Insert the plastic window into one side of the frame, then place your photo on top (required photo size is 118mm wide x 168mm height). Replace the backing board and ensure everything is held securely.

Place your finished plaster print face down inside the plastic moulding tray. You may need to give the tray a wipe before you do this. Insert your plaster moulding tray with your plaster print inside into the frame, ensuring the edges of the tray fit comfortably into place. It may need a firm push to sit into position. Replace the backing board and push the tabs across to hold firmly. Now display your artwork!

ALTERNATIVE IDEAS



Use your clay to model a picture, a pattern or even type! Try printing your finger or foot prints or your pet's prints. Don't forget to press the clay firmly into the plastic moulding tray so that no plaster can spread underneath it and also to make any text read backwards as it will reverse when you pour in the plaster!

GO GREEN

Tips for sustainability



Sell or donate your creation rather than landfilling it if possible.



Dispose of packaging responsibly*



*Check with your local authority for further information on responsible recycling.

CAUTION! Keep out of reach of young children. Keep away from food, drink and animals. When using paints ensure carpets, clothes and furniture is protected. Avoid contact with eyes, rinse immediately with plenty of water and seek medical advice. If swallowed, seek medical advice immediately and show packaging. Please remove all packaging attachments before giving to the child. Please retain packaging for future reference. Colour and shape of contents may vary.

WARNING:
CHOKING HAZARD - Small Parts.
Not suitable for children under 3 years.

Colour and shape of contents may vary.

Adult supervision required!
Do not place plaster in mouth. Do not inhale dust or powder. Do not apply to the body.
Dust may irritate eyes, nose and throat.

ADULT SUPERVISION REQUIRED



Created by © Colorific
Colorific Australia: 1800 801 545
info@colorific.com.au

www.colorific.com.au
Designed in Australia MADE IN CHINA

Item No. I63930