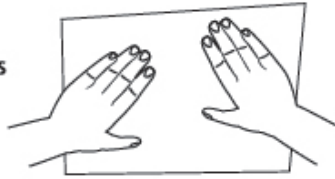


CLAY FOSSIL NECKLACES

First put down some old newspaper/paper to prevent mess. Wear a smock or old clothes to protect clothing. When using paints and clay ensure carpets, clothes and furniture are protected.



STEP 1. Let's start moulding our fossil shapes. Open the foil bag and remove the clay. Break the clay portion in half and roll them into 2 balls.

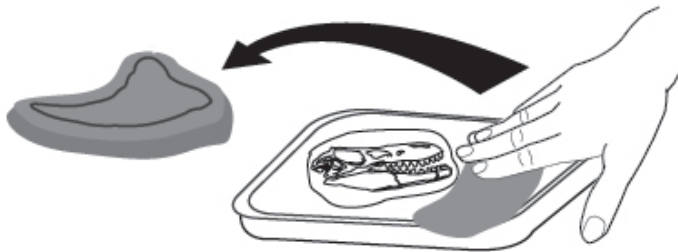


STEP 2. Dinosaur Skull
Massage one of the clay balls into the skull mould leaving some clay to hang over the edge of the tray. REMOVE THE CLAY SHAPE STRAIGHT AWAY SO IT DOES NOT GET STUCK TO THE TRAY. To do this, gently work your fingers around the edges of the clay shape to lift out of the tray. If the skull shape is not detailed or is sticking to the tray, remove all the clay, roll into a ball and re-apply. Place aside with the dinosaur skull facing up to dry.



Tip: Hang some clay over the outside of the mould tray. This will make it easier to peel out of the cavity!

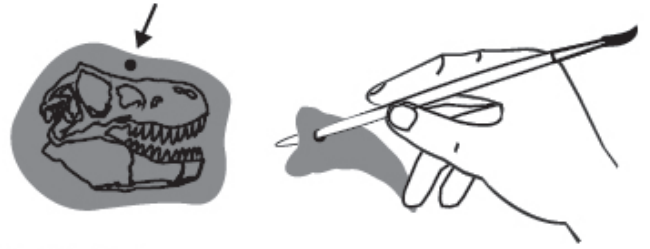
STEP 3. Dinosaur Tooth
Massage the other clay ball into the tooth mould and pat down. Use the same removal method as the dinosaur Skull. Place aside with the tooth facing up to dry.



STEP 4. Use the sculpting tool to cut any unwanted edges and neaten up the overall shapes.



STEP 5. Turn the moulds into necklaces by using the paint brush end to poke a hole near the tops of the shapes. Ensure the hole goes all the way through. This will be used to thread the string through to make the necklace. Test the hole is large enough by threading through the string then removing.



STEP 6. Painting
Fill a container with water to wash your brush. Use the brown paint to add shadow effects around the bones. Once the brown paint has dried, paint the raised bone areas in white. Wash your brush immediately after you have finished painting. Once you have finished painting all your shapes place them in a safe area and allow to dry for around 2 hours. If the clay hasn't fully dried underneath just turn it over until hard.



TIP:

Add several coats of paint for brighter colours!

STEP 7. The Necklaces
Ask a parent to measure your neck and how far you want the string to hang down. Thread through the clay shapes and tie a tight knot at your desired length. Cut off any unwanted excess string. Please ensure the shape to fully dried. Now your necklace is ready to wear!



THINKING GREEN! TIPS FOR SUSTAINABILITY

- Sell or donate your item rather than landfilling it if possible.
- Dispose of packaging responsibly*
- *Check with your local authority for further information on responsible recycling.



Caution! Not suitable for children under 3 years. Keep away from food, drink and animals. When using paints ensure carpets, clothes and furniture are protected. Product may stain. Wash hands thoroughly with soap and water immediately after use. Avoid contact with eyes. In case of contact with eyes rinse immediately with plenty of water and seek medical advice. All items in this product are not for consumption. If swallowed seek medical advice immediately. Please remove all packaging attachments before giving to child.

Adult supervision required. Please retain packaging for future reference. Colour and shape of contents may vary.

colorific™
www.colorific.com.au
Created by © Colorific
Colorific Australia: 1800 801 545
info@colorific.com.au
Made in China

Item No. 177272